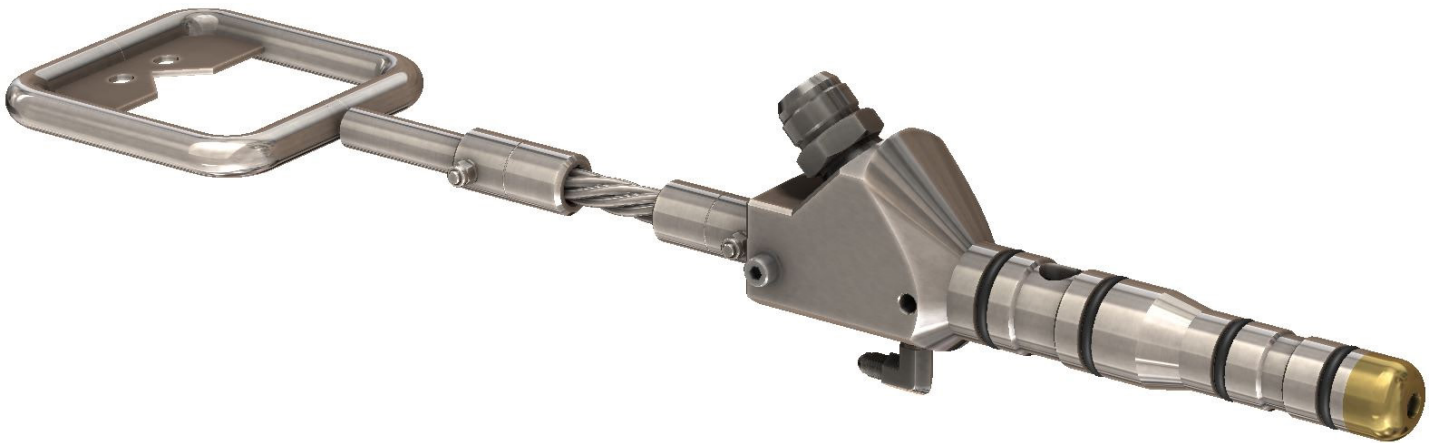


CATEGORY: Hot Stabs TMT Hybrid High / Low Flow Hot Stab

Engineered Tooling Solutions *FAST*



The TMT Hybrid High Flow / Low Flow Hot Stab is comprised of a high flow port A (handle) and a regular flow port B (nose). The hot stab can be used in an API 17H type A or C or ISO 13628-8 receptacles. The TMT Hybrid High Flow / Low Flow Hot Stab is rated to 10,000psi (690bar).

The TMT Hybrid High / Low Flow Hot Stab can be customised to suit most applications.

Features:

- Easy to install and remove
- Corrosion resistant materials
- 2507 stainless steel
- Field proven
- Can be used with water, oils or glycols

Specifications:

- | | |
|----------------------|--------------------|
| • Dimensions | 710L x153W x139Hmm |
| • Weight in Air | 6.3kg |
| • Weight in Seawater | 5.5kg |
| • Pressure Rating | 10,000psi (690bar) |
| • Depth Rating | Unlimited |

Specifications subject to change without notice. All rights reserved.